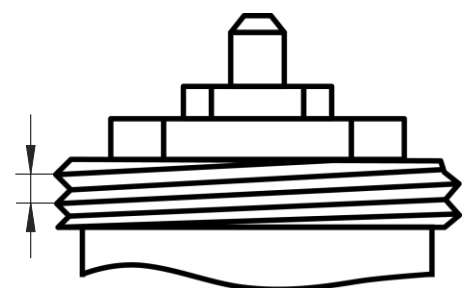
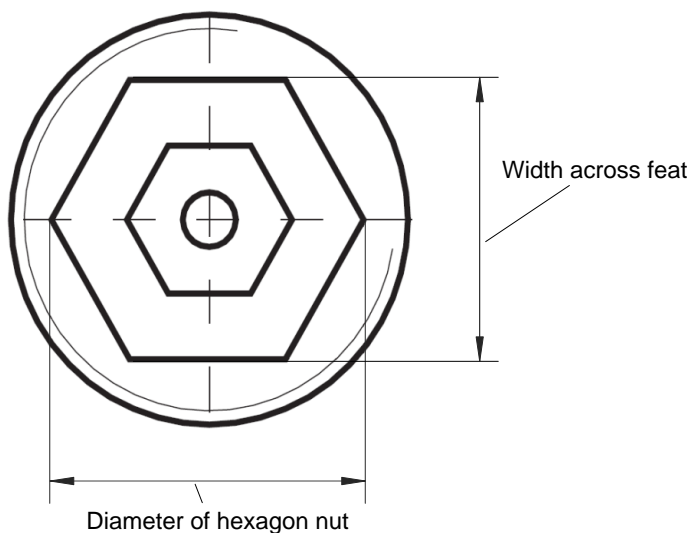
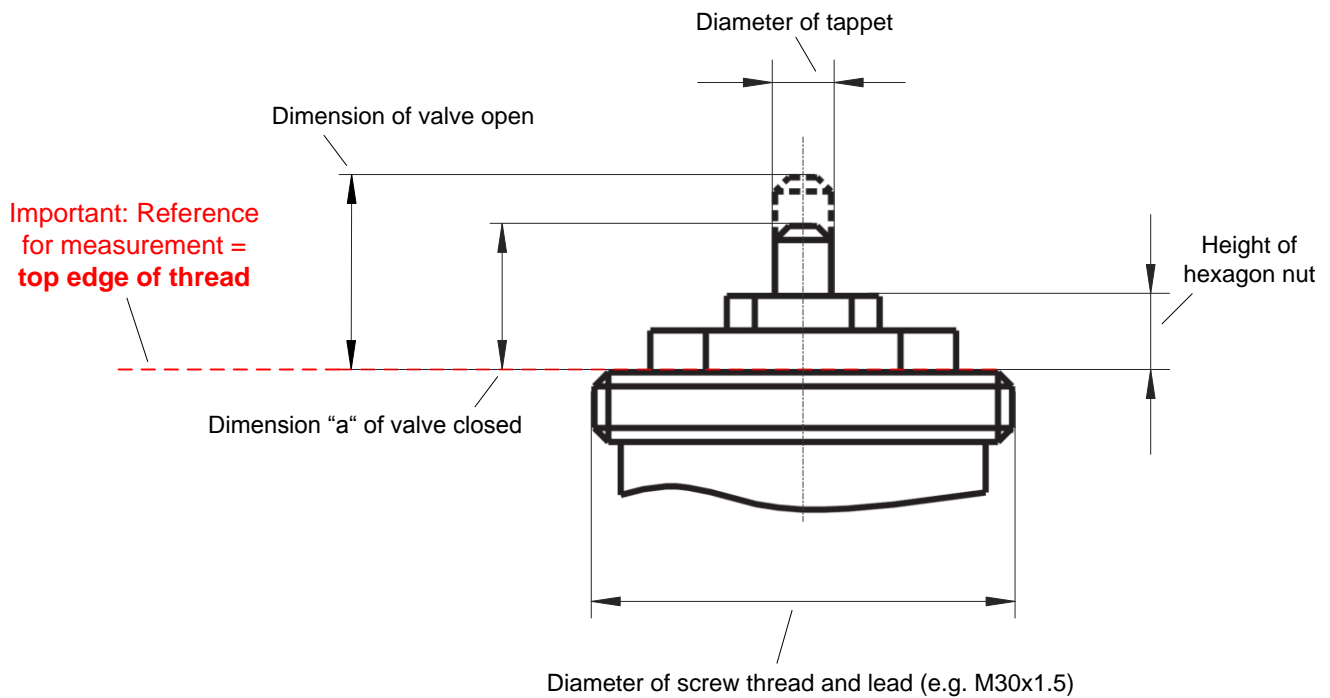


Working sheet to determinate valve adaptation

Please complete table according to drawing below (in millimetres)

	Valve 1	Valve 2	Valve 3	Valve 4	Valve 5	Valve 6
Diameter of tappet						
Dimension of valve open						
Dimension "a" of valve closed						
Height of the hexagon nut						
Diameter of screw thread						
Width across feat						
Diameter of hexagon nut						



Note on determing screw lead:
Measure the distance between thread transitions. They have 1mm or 1.5mm.